

Electricity & Gas Prices in Ireland

1st Semester 2010

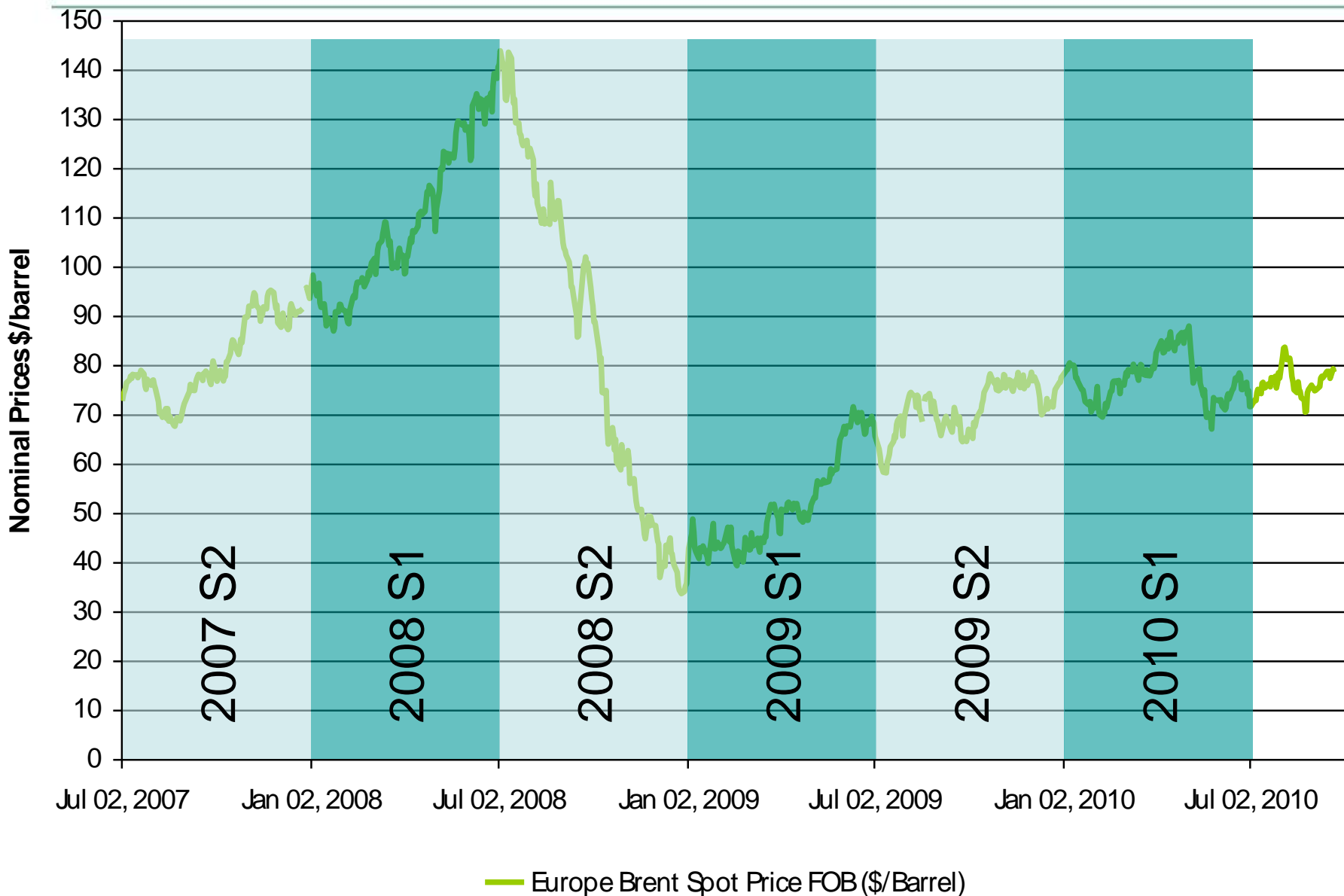
EU Comparisons 2nd Semester 2009

- Summary
- Highlights
 - Business
 - Residential
- Trends and EU comparisons;
 - Electricity & Gas Costs to Business
 - Electricity & Gas Costs to Householders in € and purchasing power parities
 - 2010 Semester 1 update for Ireland

Summary

- Electricity and gas prices fell for all consumption levels of both business and residential consumers in the second half of 2009
- In general, prices in Ireland fell at a faster rate than in the EU resulting in Ireland moving significantly closer to the EU average prices for both electricity and gas
- Further significant reduction in electricity prices in first half of 2010
- Further reduction in gas prices in first half of 2010 with the exception of large business consumers

Global Oil Prices



Highlights Business Customers

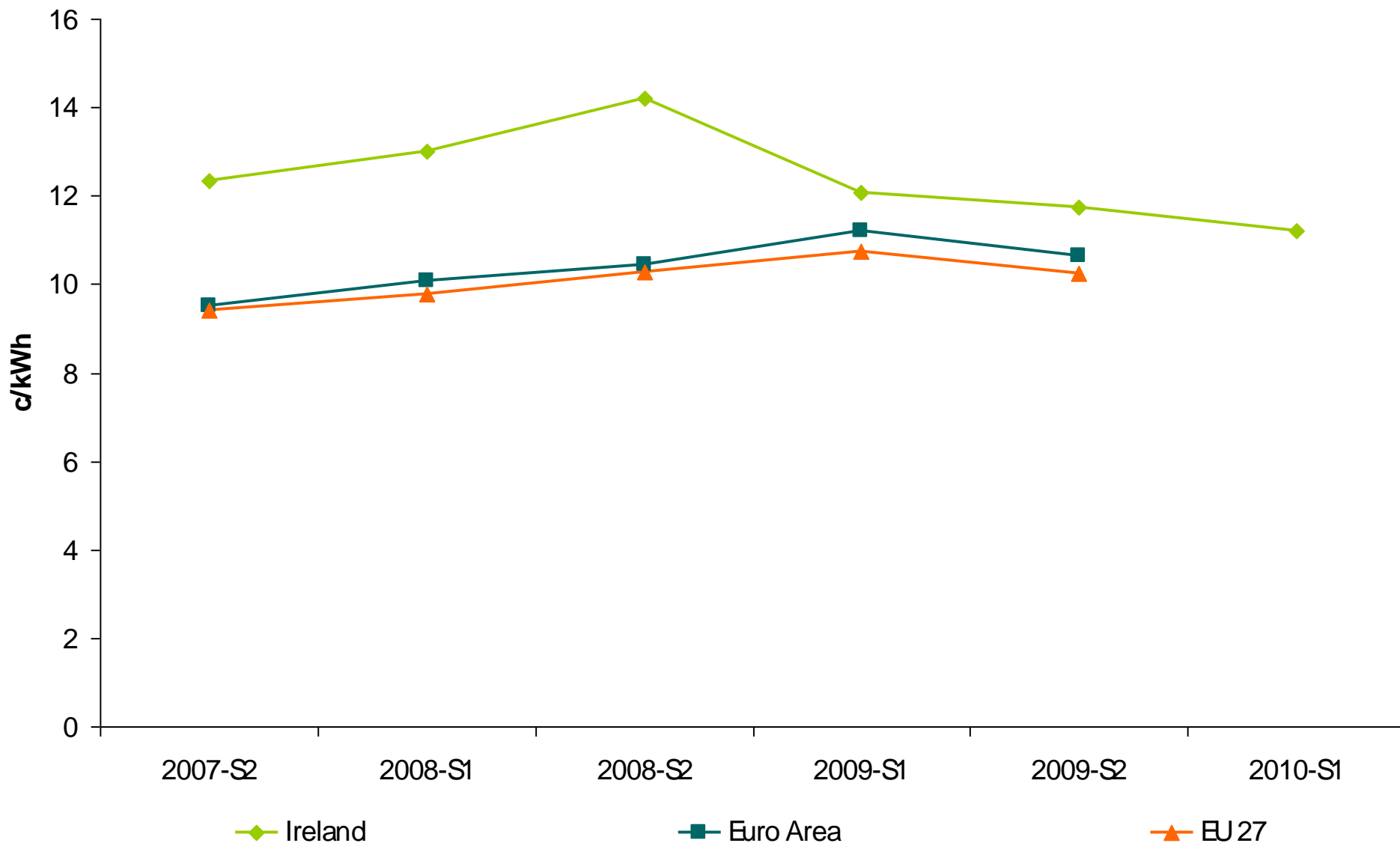
- Irish electricity prices for business fell for all levels of consumption, ranging from a 5% drop for small business consumers (band IA) to a 10% drop for the largest consumers (band IF).
- While Irish electricity prices to business remain above the European average, they moved closer to this average for most consumers.
- Electricity prices for medium to large business electricity consumers (bands ID to IF) were 4% – 6% above the EU average, down from 10% – 13% above in the previous semester. This group of consumers accounted for 53% of the market.
- Electricity price the mid range band IC moved from 12% to 15% above the average. This band accounted for 16% of the Irish business market and the average consumer here spends in the region of €150k per annum on electricity.
- Irish gas prices for business fell for all levels of consumption, ranging from a 9.4% drop for small to medium consumers (band I2) to a 26% drop for the largest consumers (band I4).
- With the exception of the smallest consumers (band I1), Irish gas prices to business were below the EU average in all consumption bands for which data is available. Prices for medium consumers was 11% below the EU average.

Business Electricity Prices (ex-VAT)

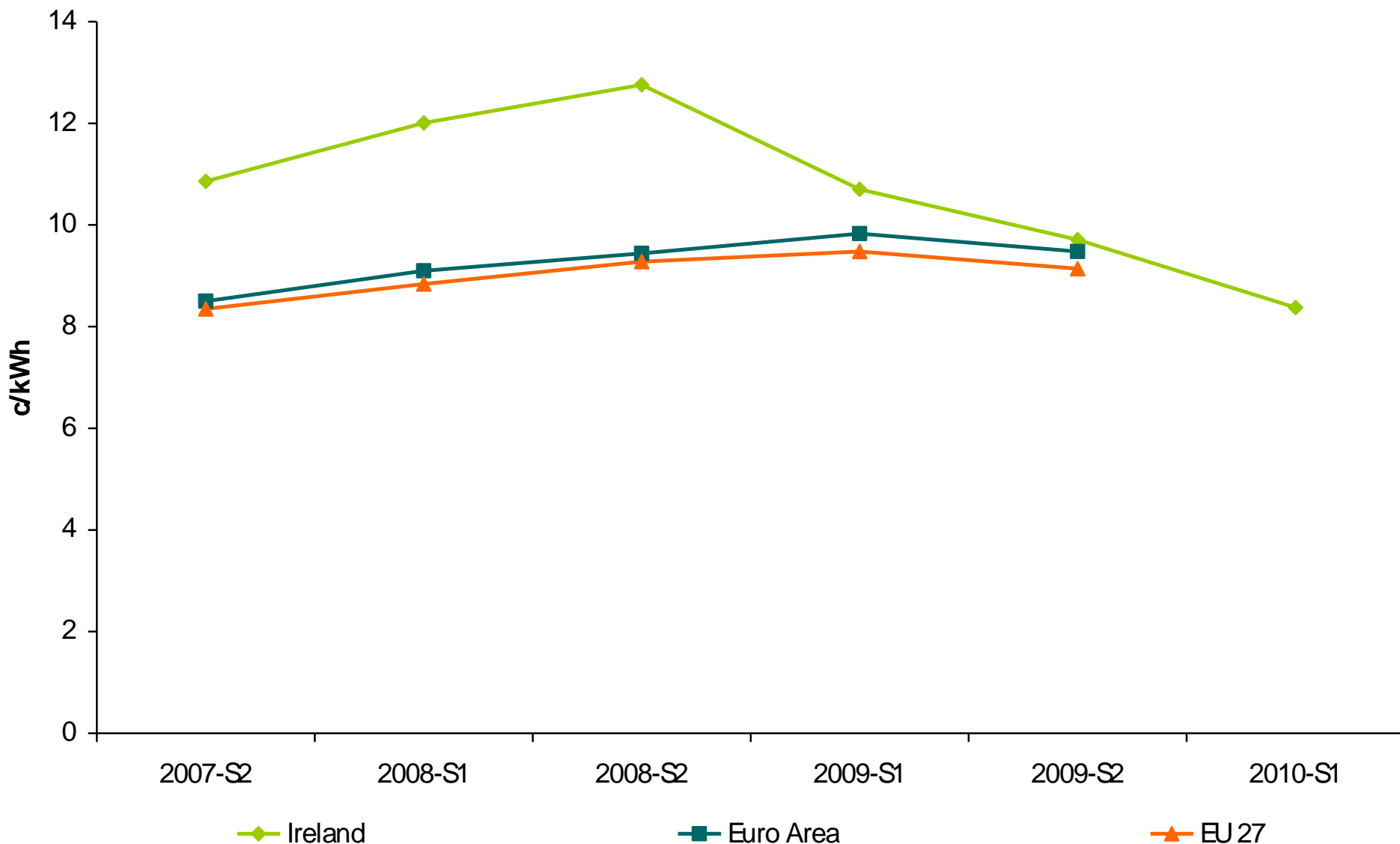
S2 2009

| Electricity Prices to Business Consumers (excluding VAT) | Cost €/kWh | % change since last semester | Relative to EU Average 2009-S2 | Relative to EU Average 2009-S1 | Band share of market |
|--|------------|------------------------------|--------------------------------|--------------------------------|----------------------|
| Band IA | 0.169 | -5.0% | 103% | 111% | 4.6% |
| Band IB | 0.141 | -6.2% | 117% | 122% | 26.7% |
| Band IC | 0.117 | -2.6% | 115% ← 112% | 112% | 15.5% |
| Band ID | 0.097 | -9.2% | 106% ← 113% | 113% | 32.3% |
| Band IE | 0.089 | -7.2% | 106% ← 110% | 110% | 12.8% |
| Band IF | 0.079 | -9.9% | 104% ← 109% | 109% | 8.2% |
| Band IG | : | : | : | : | |

Business Electricity Prices (band IC)



Business Electricity Prices (band ID ex-VAT)



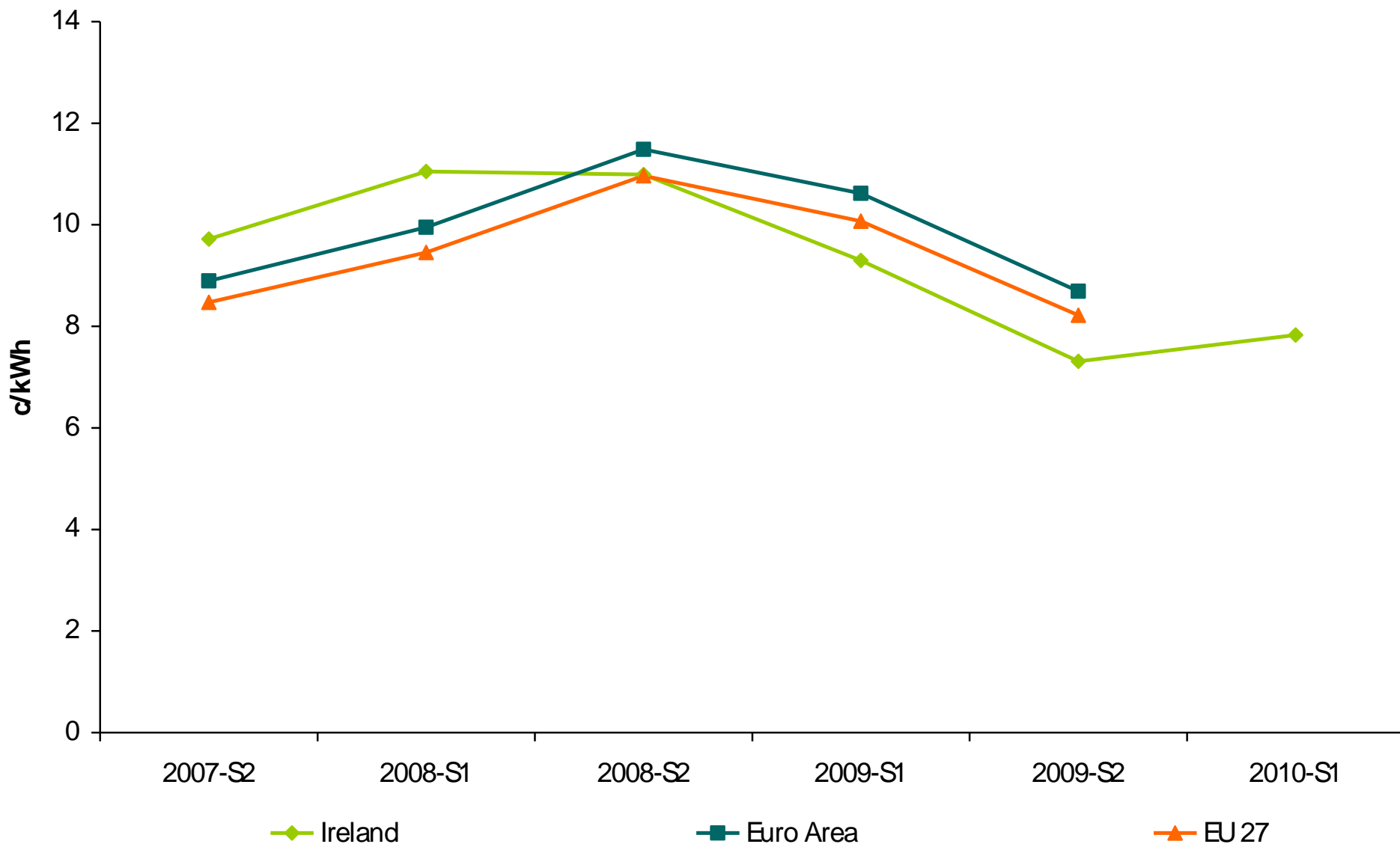
Business Electricity Prices (ex-VAT) 2010 S1

| Electricity Prices to Business Consumers (excluding VAT) | Cost €/kWh | % change since 2009 S2 | % change in 12 months |
|--|------------|------------------------|-----------------------|
| Band IA | 0.157 | -7.0% | -11.6% |
| Band IB | 0.137 | -2.9% | -8.8% |
| Band IC | 0.112 | -4.5% | -6.9% |
| Band ID | 0.084 | -13.8% | -21.7% |
| Band IE | 0.076 | -14.1% | -20.3% |
| Band IF | 0.056 | -28.7% | -35.7% |
| Band IG | | | |

Business Gas Prices (ex-VAT)

| Gas Prices to Business Consumers (excluding VAT) | Cost €/GJ | % change since last semester | Relative to EU Average 2009-S2 | Relative to EU Average 2009-S1 | Band share of market |
|--|-----------|------------------------------|--------------------------------|--------------------------------|----------------------|
| Band I1 | 12.82 | -10.9% | 106% ← | 109% | 12.7% |
| Band I2 | 9.53 | -9.4% | 95% ← | 89% | 24.6% |
| Band I3 | 7.31 | -21.4% | 89% ← | 92% | 31.7% |
| Band I4 | 6.42 | -26.4% | 87% ← | 101% | 31.0% |
| Band I5 | : | : | : | : | |
| Band I6 | : | : | : | : | |

Business Gas Prices (band I3 ex-VAT)



Business Gas Prices (ex-VAT) 2010 S1

| Gas Prices to Business Consumers (excluding VAT) | Cost €/kWh | % change since 2009 S2 | % change in 12 months |
|--|------------|------------------------|-----------------------|
| Band I1 | 0.037 | -19.3% | -28.2% |
| Band I2 | 0.030 | -12.9% | -21.1% |
| Band I3 | 0.028 | 7.1% | -15.8% |
| Band I4 | 0.023 | 0.2% | -26.2% |
| Band I5 | | | |
| Band I6 | | | |

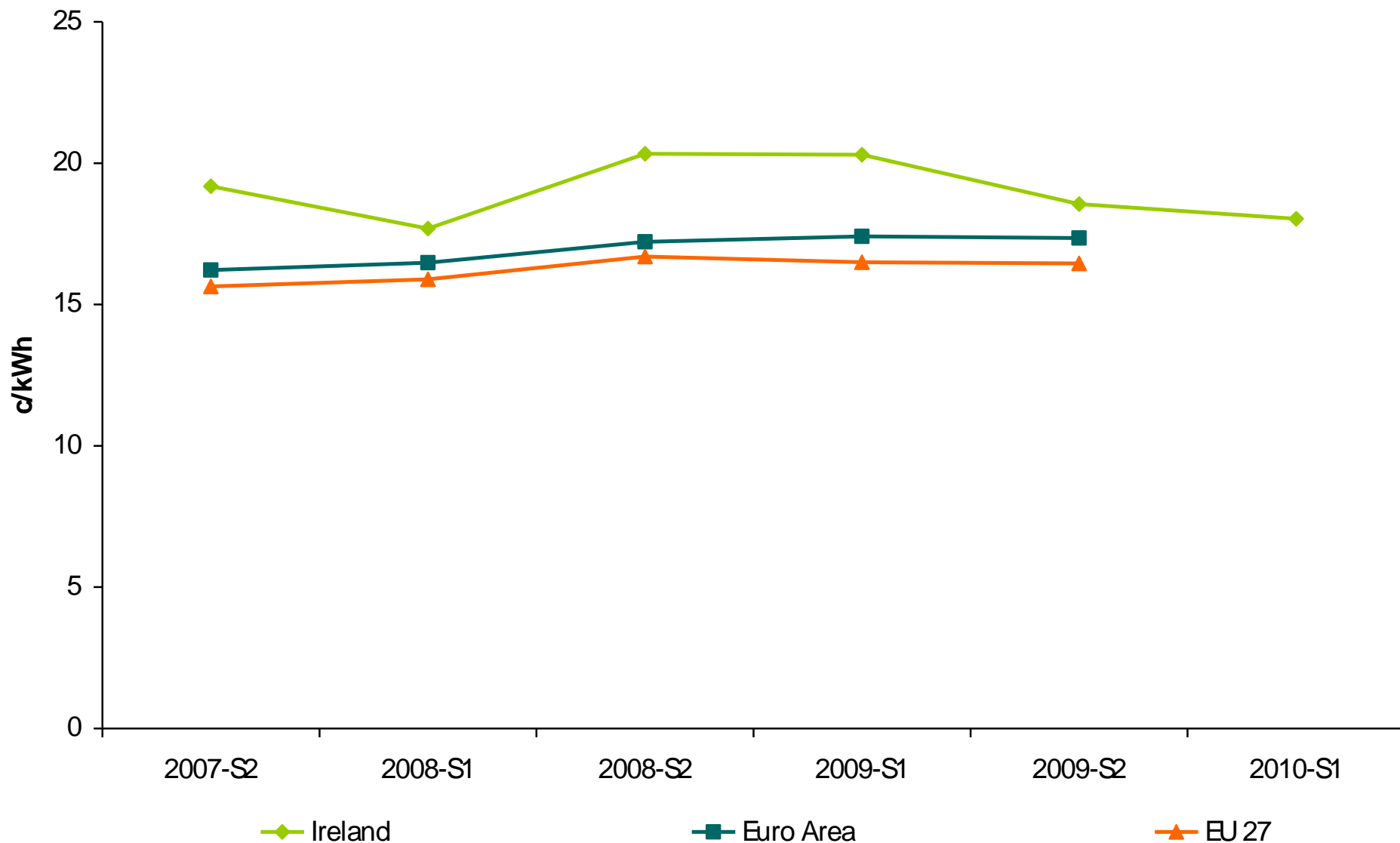
Highlights Residential Customers

- Most domestic electricity consumers experienced price reductions of between 8% and 9% between the first and second semesters of 2009.
- Irish electricity prices to householders remained above the EU average for all but the very largest consumers, 7% above for average consumption levels
 - down from 16% above in the previous semester.
- In purchasing power parity terms, Ireland is cheaper than the EU average for nearly all consumers, ranging from 2% to 21% below.
- In S2 2009, Irish gas prices for householders fell for all levels of consumption, ranging from 8.5% to 18% reduction.
- Irish gas prices were 4% above the EU average for the majority residential consumers.
- In purchasing power parity terms, Ireland is 20% below the EU average for the majority of residential consumers.

Residential Electricity Prices (€) (all taxes included) – 2009 S2

| Electricity Prices to Residential Consumers (all taxes included) | Cost €/kWh | % change since last semester | Relative to EU Average 2009-S2 | Relative to EU Average 2009-S1 | Band share of market |
|--|------------|------------------------------|--------------------------------|--------------------------------|----------------------|
| Band DA | 0.416 | -3.9% | 173% ← 180% | | 0.8% |
| Band DB | 0.206 | -11.7% | 117% ← 133% | | 7.1% |
| Band DC | 0.186 | -8.6% | 113% ← 123% | | 30.5% |
| Band DD | 0.169 | -8.1% | 107% ← 116% | | 53.0% |
| Band DE | 0.147 | -9.0% | 94% ← 104% | | 8.6% |

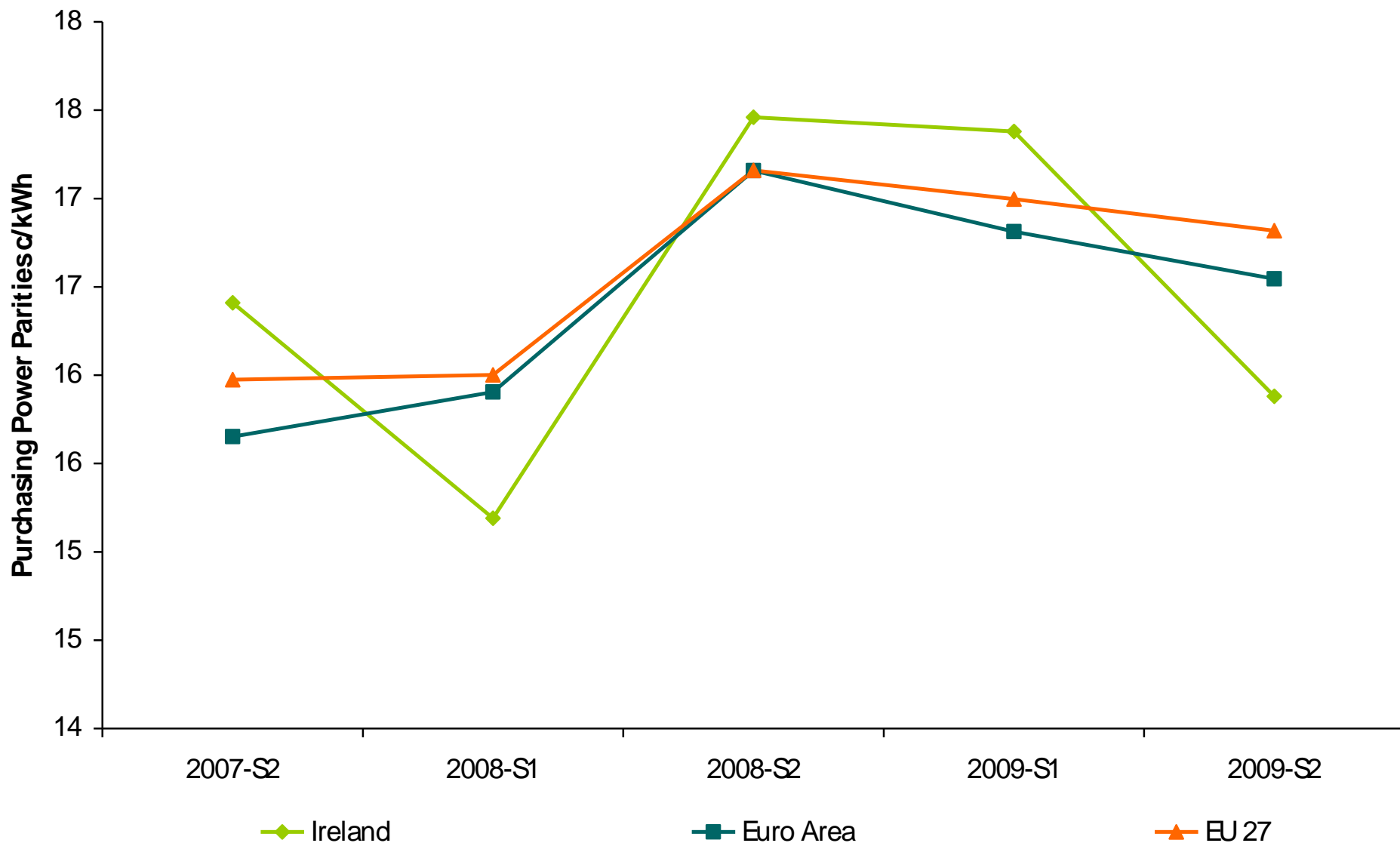
Residential Electricity Prices (€) (band DC all taxes included)



Residential Electricity Prices (€) (all taxes included) – 2010 S1

| Electricity Prices to Residential Consumers (all taxes included) | Cost €/kWh | % change since 2009 S2 | % change in 12 months |
|--|------------|------------------------|-----------------------|
| Band DA | 0.403 | -3.1% | -6.8% |
| Band DB | 0.211 | 2.3% | -9.6% |
| Band DC | 0.180 | -2.8% | -11.2% |
| Band DD | 0.161 | -4.5% | -12.3% |
| Band DE | 0.140 | -4.6% | -13.1% |

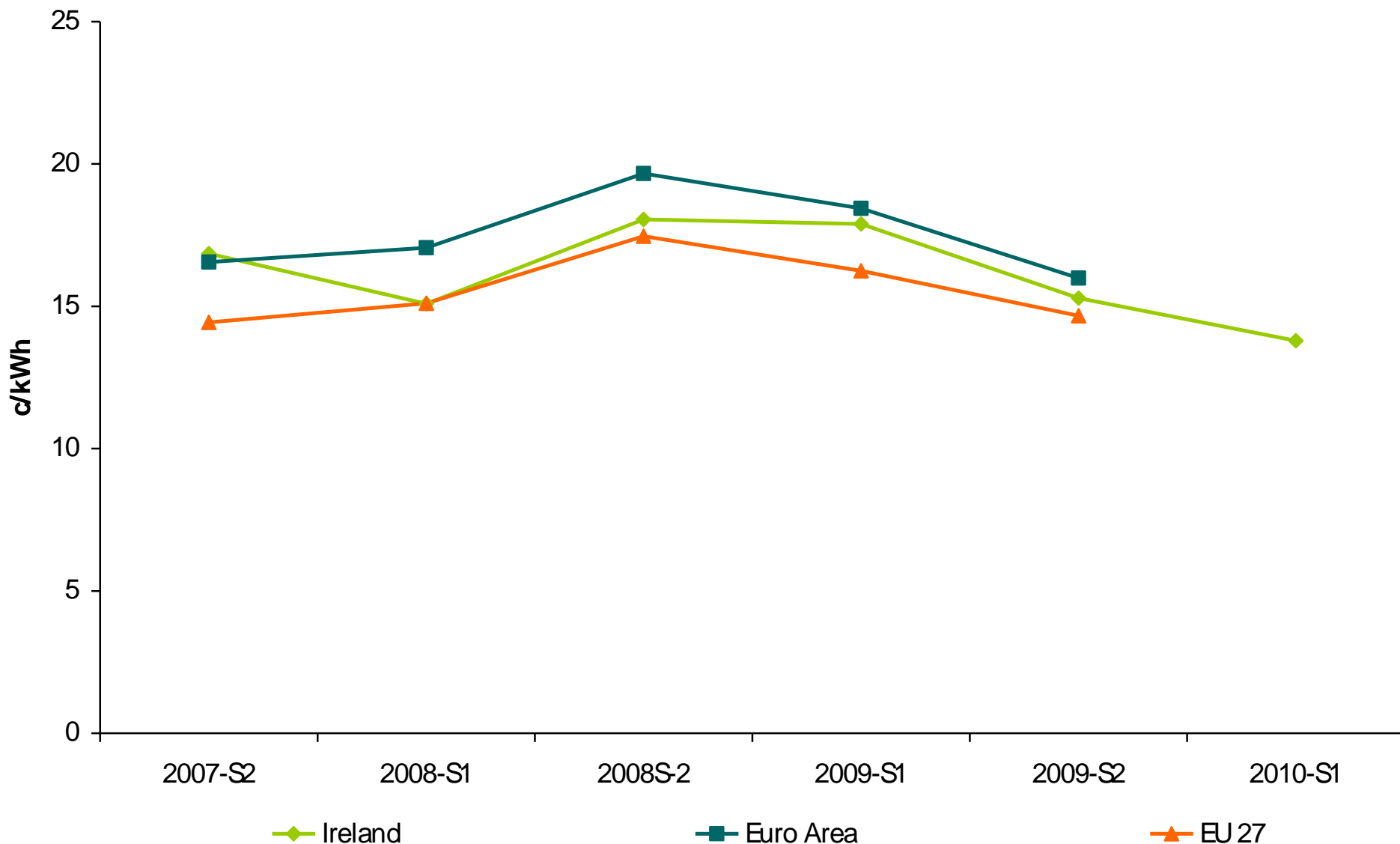
Residential Electricity Prices (€ppp) (band DC all taxes included)



Residential Gas Prices (€) (all taxes included) – 2009 S2

| Gas Prices to Residential Consumers (all taxes included) | Cost €/GJ | Cost €/kWh | % change since last semester | Relative to EU Average 2009-S2 | Relative to EU Average 2009-S1 | Band share of market |
|--|-----------|------------|------------------------------|--------------------------------|--------------------------------|----------------------|
| Band D1 | 17.56 | 0.063 | -8.5% | 83% ← 88% | | 2.5% |
| Band D2 | 15.29 | 0.055 | -14.5% | 104% ← 110% | | 95.5% |
| Band D3 | 14.12 | 0.051 | -17.9% | 104% ← 114% | | 2.0% |

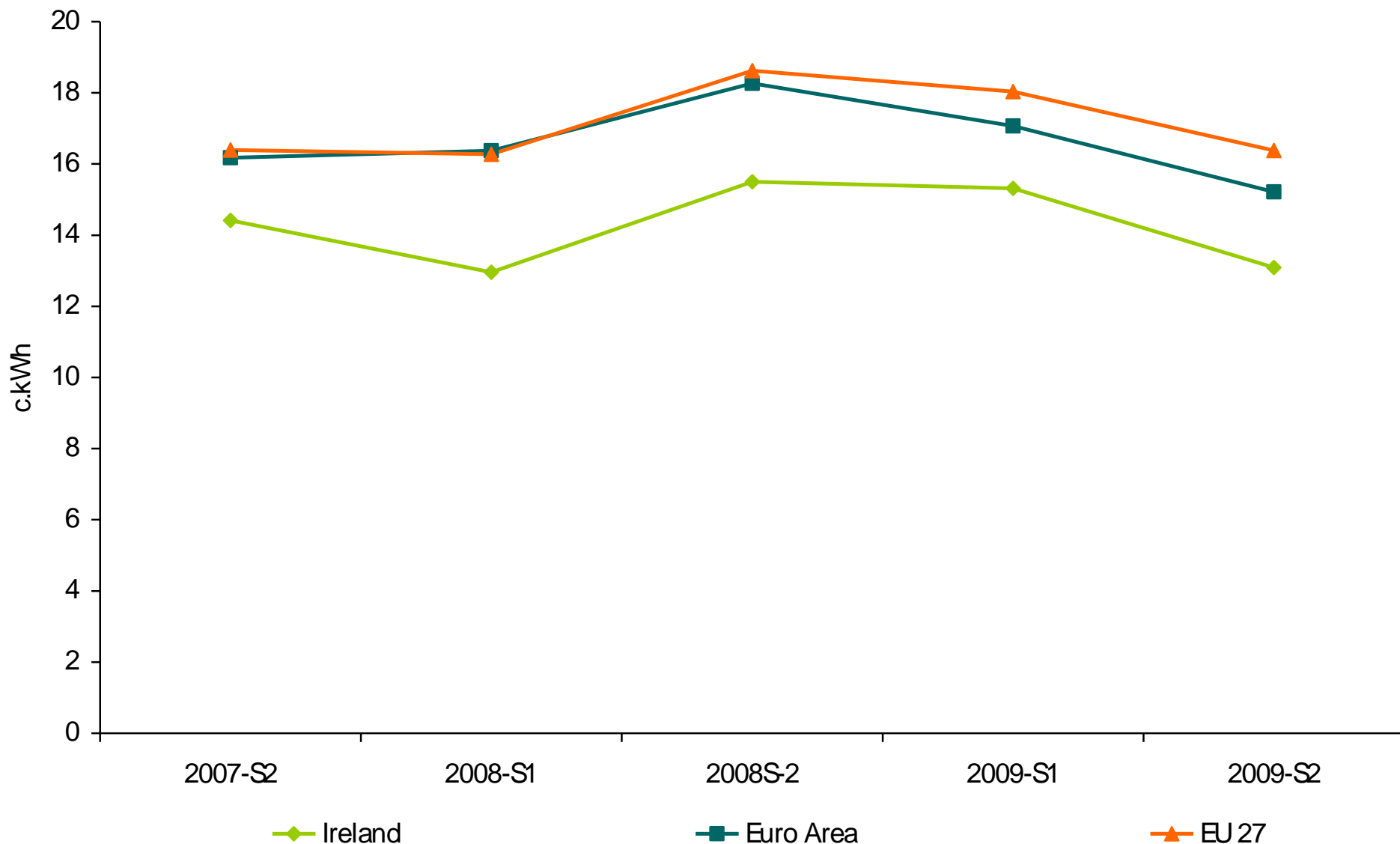
Residential Gas Prices (€) (band D2 all taxes included)



Residential Gas Prices (€) (all taxes included) – 2010 S1

| Gas Prices to Residential Consumers (all taxes included) | Cost €/kWh | % change since 2009 S2 | % change in 12 months |
|---|------------|------------------------|-----------------------|
| Band D1 | 0.055 | -13.2% | -20.6% |
| Band D2 | 0.050 | -9.8% | -22.9% |
| Band D3 | 0.047 | -7.1% | -23.7% |

Residential Gas Prices (€ppp) (band D2 all taxes included)



Electricity & Gas Prices in Ireland

Thank you.



Ireland's EU Structural Funds
Programmes 2007 - 2013

Co-funded by the Irish Government
and the European Union

*The Sustainable Energy Authority of Ireland
is financed by Ireland's EU Structural Funds
Programme co-funded by the Irish Government
and the European Union.*